

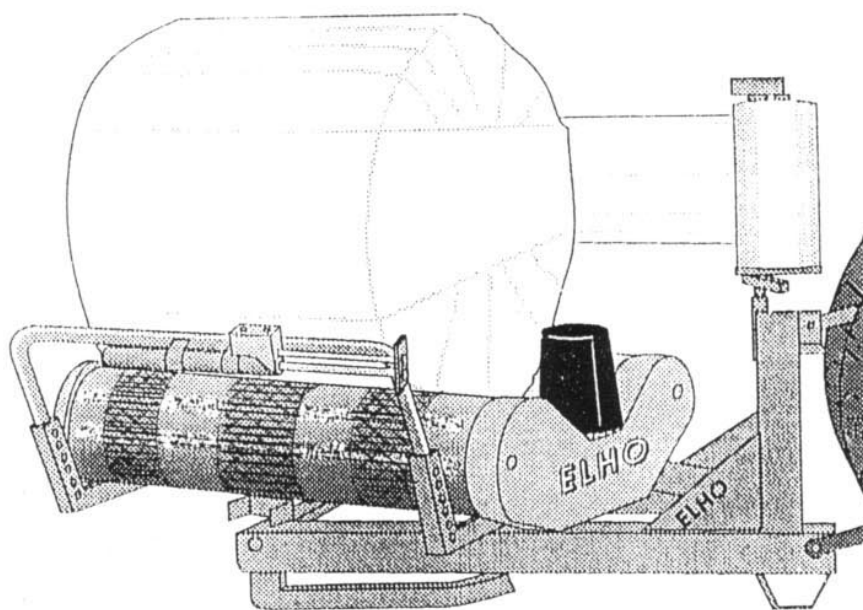
ELHO

SILO-MATIC

310/410 & 320/420

MOUNTED BALEWRAPPER

Serie 10.2



OY ELHO AB

68910 BENNÄS

Finland

EC Declaration of Conformity

Oy ELHO AB
Industrivägen 6
68910 Bennäs
FINLAND

We, the manufacturer of:

ELHO Bale Wrappers 310/320, 320 ACI, 520, 520AC, 1010, 1210, 1210AC
Serial nummer 10. 2

declare, that these machines fulfil the essential part of:

Directive 89/392/EEC

Directive 91/368/EEC

Directive 93/44/EEC

Directive 93/68/EEC

The supply of Machinery (Safety) Regulations 1992 as amended.

In the design of the machines the following standards and regulations have been followed for applicable parts:

EN 292-1

EN 292-2

EN 294

EN 349

EN 811

EN 1152

SFS 5091

Bennäs 30 . 12 . 1994



Dan Johan Löfvik
Production Manager

WARRANTY

ELHO Silo-Matic bale wrapper is guaranteed for 6 months. The warranty covers faulty parts and manufacture. The warranty is not valid for wearing parts.

Parts subject to warranty claims are changed or repaired free of cost if they are sent to us or our importer, carriage paid.

The warranty does not cover labour or travel costs.

The warranty is valid only if the fault is reported to us or our importer within 14 days of occurrence.

According to normal practice we do not accept any responsibility for damage which occurs as a result of:

- incorrect use
- unauthorised modification
- lack of maintenance

The warranty excludes any secondary damage to machine or any consequential losses caused as a result of faulty materials or manufacture.

E L H O Silo-Matic

Index	Side
-Technical specifications	1
-Safety instructions	1
-Mounting instructions	2
-The film pre-stretch unit	3
-Adjustments	4
-Wrapping instructions	6
-Maintenance	7
-Spare parts	8
-Mounting of optional equipment	20

Technical specifications

Total Length	2,3 m
Transport Width	1,3 m
Weight	600 kg
Recommended bale diameter	1,2-1,5 m
Film width	0,5 m
Recommended film thickness	20-30 my

STANDARD EQUIPMENT

Hydraulic valve unit
Bale Support Rollers
Chain drive to both turntable rollers

Safety instructions

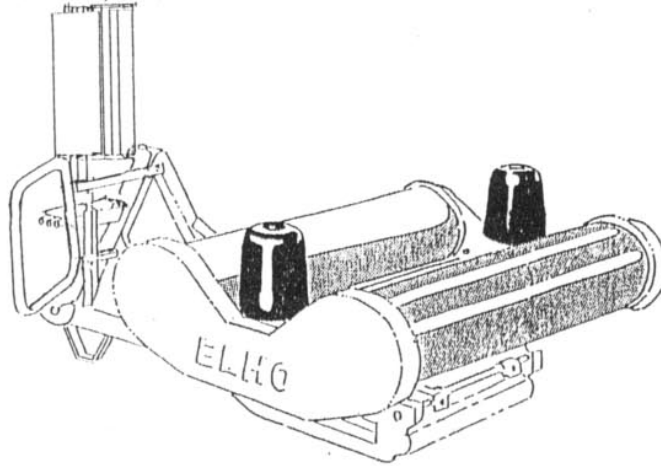
ELHO round bale wrapper is intended to wrap fodder bales with plastic film. Read the manual carefully before You use the machine or make any adjustments or maintenance to it .

Note!

- Do not allow children and outsiders near the machine when operating.
- A bale sliding from the table is dangerous. Do not run the table faster than 20 rpm.
- Keep the safety guards and covers in good condition and mounted.
- Always stop the tractor before maintenance or adjustments.
- Never work under tipped unsupported turntable.
- Always place the bales in the center of the turntable, parallell to the rollers.

Mounting instructions

The ELHO round bale wrapper is normally delivered completely mounted, but due to transport it sometimes is necessary to mount the safety guard, film pre-stretch unit and the support rollers before start using the machine.



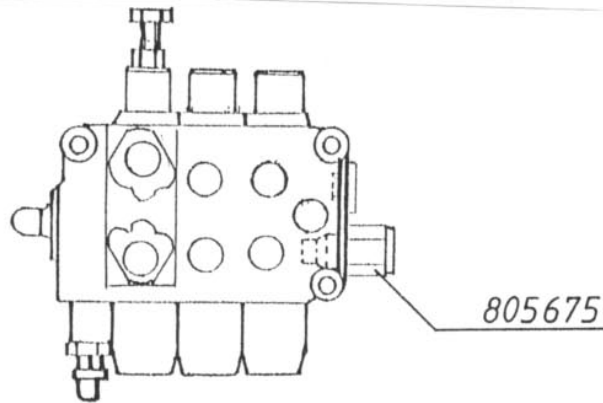
- The safety guard rail is to be mounted on the left side just behind the three point linkage.
- The support rollers are mounted by three hexagonal screws to the turntable ends.
- The film pre-stretch unit is to be mounted in the tube beside the hydraulic valve. The height of the pre-stretcher is to be adjusted so the center of the film will be at the same level as the center of the bale.

HYDRAULIC CONNECTION

The hydraulic is to be connected to the tractor by pressure to the hose marked by red color. The blue one should have free return. If the wrapper is connected to the tractors double acting hydraulic outlet it is particularly necessary to ensure that the pressure in the return line is below 5 bar. It happens quite frequent that the pressure in the return line increase why the tractor external hydraulic lever has moved from its fully engaged position.

It is also common that hydraulic quick-release couplings on different tractors do not always suit each other to 100% although they are made to the same nominal size and mechanically fit in each other. Their spring loaded cones may not fully open and particularly by increased oilflow the returnline may suddenly close.

The connection to the John Deere tractors closed circuit hydraulic system need always special attention. Please contact your local John Deere dealer. A JD plug is also available through your ELHO Dealer/Importer. The order number is 805675. With this plug the valve block is converted to closed center type. The plug is mounted in the bigger of the two holes at the return end of the valve block according to the Fig below.



The film pre-stretch unit

To obtain a good wrapping result the pre-stretcher is very essential. Get therefore familiar with the function, adjustments and maintenance of the pre-stretcher.

The plastic film roll is to be lifted in position so the sticky outer side comes towards the bale. The film is tread between the rollers according to the fig below.

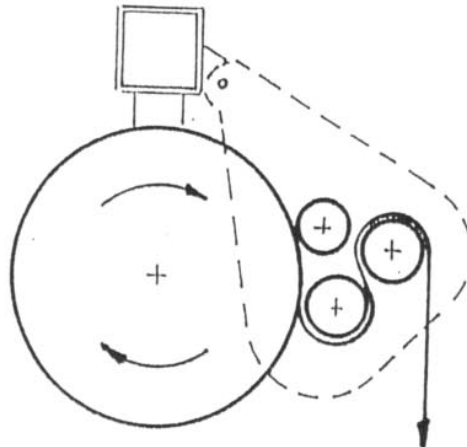


Fig. 2

Beneath the idler roller there is a small friction brake to make the rotation of the roll more steady. This brake is to be only very light tensioned.

70% prestretch is obtained by use of the gears with 34 teeth and 57 teeth. If the used film need less prestretch gears with 35 teeth and 55 teeth are available, and this set will give 57% prestretch.

Adjustments

CHAIN TENSION

When needed it is possible to tension the chains to the rollers by loosening the bearing screws and pushing the rollers from each other. Note that the rollers are to be kept parallel by pushing both ends the same amount.

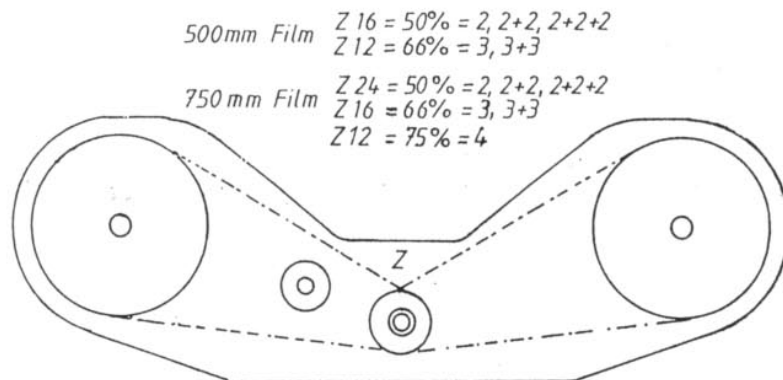
BALE DIMENSION

The most necessary adjustment when changing bale dimension is to reposition the film pre-stretch unit with the new bale center height.

Normally it is recommended to push the rollers max. from each other also when wrapping 1.2 m bales. This will keep the bale more steady on the turntable. Extending this is done in the same manner as the chain tensioning, but the chain has also to be lengthened with the extra chain-pieces delivered around the additional drive sprockets.

NUMBER OF FILM LAYERS

ELHO Silo-Matic bale wrappers are supplied with main drive sprockets for 50% and 66% nominal overlap. When changing to a bigger sprocket it is also necessary to extend the chain by the joint-pieces delivered with the machine.



These settings will produce on the majority of the bales, positive overlaps and an excellent "ELHO protection". When using a bale monitor and 750mm film it is possible to use the 12 tooth sprocket on a 4 layer 1 pass system, set the bale monitor to give a minimum of 3.5 turns after the bale is just covered with plastic film.

WARNING

The 750mm pre-stretchers are supplied with an adaptor for 500mm film, do not use 500mm film without changing the sprockets.

The table below contains the sprockets available for ELHO wrappers. The alternative "Economy" sprockets can be used on very well shaped bales shortly after baling, when it is required to minimise the use of film.

When using "Economy" sprockets the bales will not have the special "ELHO protection"

When using good quality film in normal baling/wrapping temperatures at 70% stretch the normal effective width of the film on the bale is: 500mm film = 390mm to 410mm, and 750mm film = 590mm to 610mm.

If the film on the bale is narrow, (in very hot or bright weather) check the brake adjustment and the speed of the turntable.

To obtain good film coverage the forward feed of the bale (at point of wrap) should never exceed 50% of the effective film width.

For average shaped bales ELHO recommend the use of standard sprockets which give a safety margin.

The use of the alternative "Economy" sprockets reduces the use of film by about 12%.

	Film width	Sprockets (teeth) Z a/b Z		Method Layers/bale rotation	Theoretical bale feed mm (L)	Approx overlap mm
Standard	500	54	12/12	3, 3+3	120	270
Standard	500	54	16/16	2, 2+2, 2+2+2	160	230
Economy	500	54	18/18	2, 2+2, 2+2+2	180	210
Economy	500	48	16/16	2, 2+2, 2+2+2	180	210
Standard	750	54	12/12	4	120	470
Standard	750	54	16/16	3, 3+3	160	430
Standard	750	54	24/24	2, 2+2, 2+2+2	240	350
Economy	750	48	12/12	4	135	455
Economy	750	48	24/24	2, 2+2, 2+2+2	270	320

500mm PRE STRETCHER

Economy sprocket Z 18/18 teeth Part number 801095

750mm PRE STRETCHER - two sprockets are required.

Economy sprocket Za 48 teeth Part number 801710

Economy sprocket Zb 48 teeth Part number 801700

Please note: On a machine with 750mm pre-stretcher that has been changed to Za/Zb 48 tooth sprockets, when using 500mm film only fit Z 16 teeth sprocket for "Economy" setting.

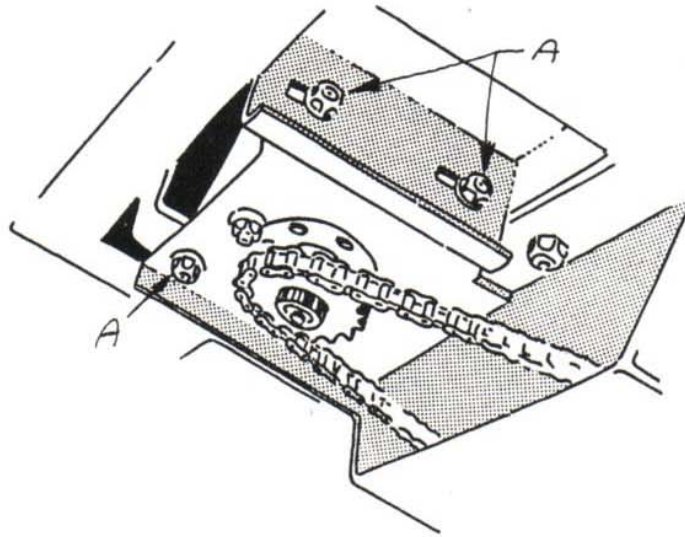
Wrapping instructions

- When the ELHO Silo-Matic is mounted to the tractor ensure that the hydraulic oil has free return.
- Turn the parking-support back and level the machine horizontally.
- Adjust the tractor motor-speed to obtain 20 rpm on the turntable.
- Lift the bale on the turntable and check once again that the film-center height is right. It is also essential that the bale is put on parallel to the rollers.
- Tie the end of the film for example to the bale-twine and start the wrapping by gently pulling in the hydraulic control lever.
- When the whole bale is wrapped in the desired layers of film, stop the turntable, cut the film and ensure its end to the bale by treading it beneath and around the previous layer in the end of the bale.
- If You has desired to wrap 2+2 or 3+3 layers, stop when the bale is completely wrapped and make an ink line across the film. Then wrap until the ink-line is completely covered.
- Turn the table to the tipping position square to the frame with the drive end towards the operators side and tip the bale of the table. If You attempt to tip the bales in two layers, ensure that the tractor has enough front-end load. Make the row as straight as possible on an even surface. Then it is more easy to succeed with the two layer tipping. Do not allow anyone beside the wrapper when tipping in two layers. It is not recommended to tip 1,5m diameter bales in two layers.

Maintenance

The ELHO Silo-Matic wrapper is strongly made and will do a good job for You for a long time when keeping it in good maintenance according to the following instructions.

- Keep the hydraulic oil clean in the tractor used for the Silo-Matic. This is essential to obtain long life of the hydraulic motor.



- Check frequently the tension of the chains. Lubricate the chains with oil. It is easy to tension the chain of the hydraulic motor when the turntable is tipped and supported, with an additional support. The mounting bracket of the hydraulic motor can be slid by loosening the three mounting screws A in the fig. Tensioning of the rollerchains is described in the chapter "Adjustments".
- In the pre-stretcher unit, the bearing sleeves of the intermediate gears are to be lubricated with oil. (Loosen the center-screw and lift the washer). The gears of the pre-stretcher is to be kept lightly greased.
- The turntable bearing is to be greased after each period of use. Lubricate also the turntable tip-bearings.
- Clean the machine throughout after the season, repaint damages on the painting and store the wrapper in a dry place.

MOUNTING OF OPTIONAL EQUIPMENT

CUT & TIE CYLINDER

The wrapper is prepared for mounting of a film-cut cylinder. The mounting is done according the following instructions.

Start by mounting the safety bar to the turntable A fig 4. Remove the cover between the rollers on the turntable. Tip and support the table with the safety bar towards the tractor.

Mount the hydraulic hose for the cut-cylinder ($1/4$ " $l=2,3m$) by its 90 degree fitting to the rotating oil connection bush in the center according fig 2 and fig 3. The mounting is best done from the frontside. The hose is then drawn on the upper side of the turntable frame according to the fig.

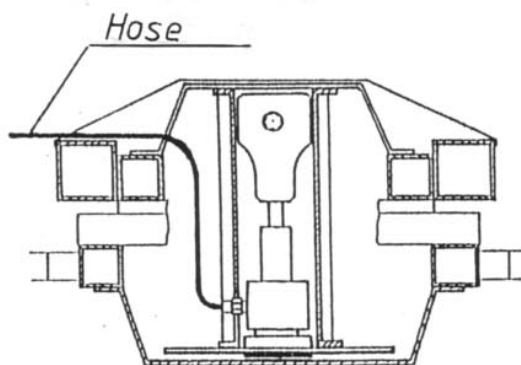


Fig. 2

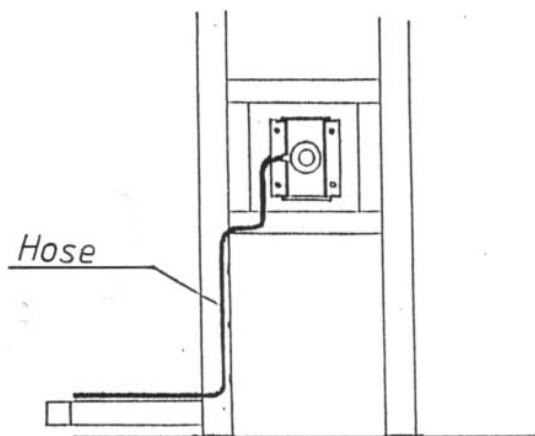


Fig. 3

Mount the cut-cylinder by its brackets according fig 4. Mount the hydraulic hose to the cylinder and mount the turntable cover back on its site.

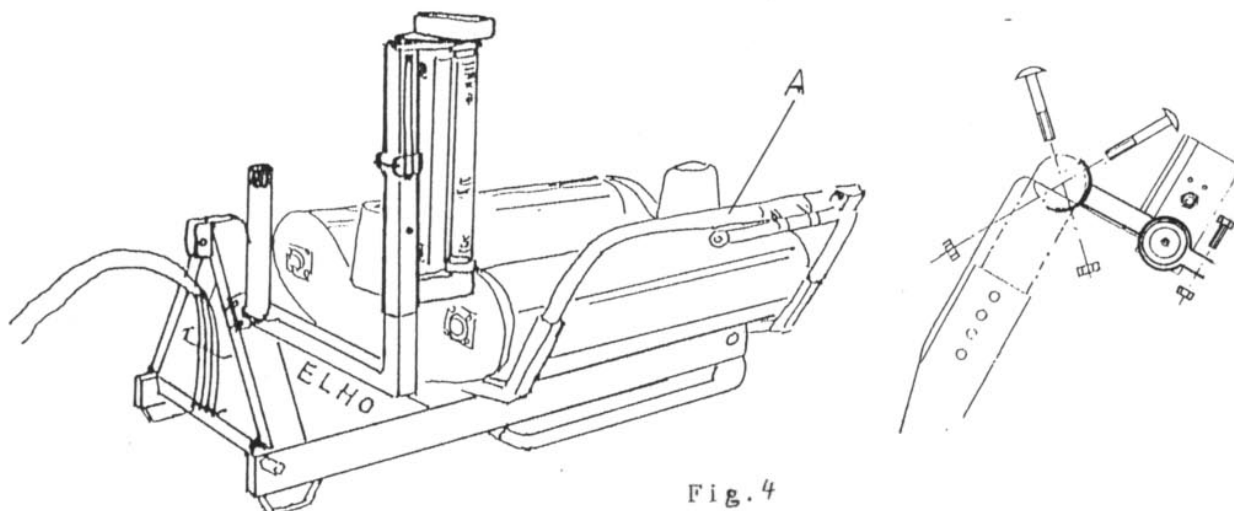


Fig. 4

The hydraulic valve for the cut-cylinder is to be mounted in serial connection to the original double-leaver valve according the fig 5. by use of the 3/8 " fittings bypacked. Remove first the double leaver valve from the wrapper, remove the return-oil hose and plug its hole. The just removed return-oil hose is to be mounted to the return outlet (T) of the singel leaver valve.

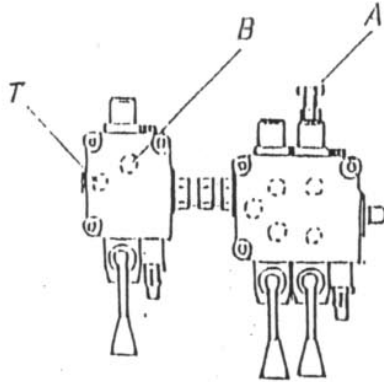


Fig. 5

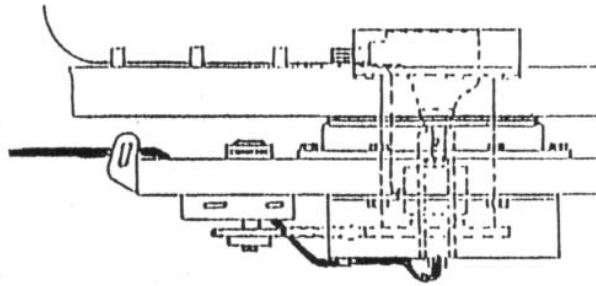


Fig. 6

Mount the extension parts for the hydraulic hoses, one each time to be sure to keep the functions unchanged.

The hose from the outlet B fig 5 is to be drawn together with the motor hoses down under the center of the turntable and connected to centershafts 1/4 " oil-inlet. Fig 6.

Mount the valve-assamblly to the new support, which is intended for the rear squerbar of the tractor cabin. Fig. 7.

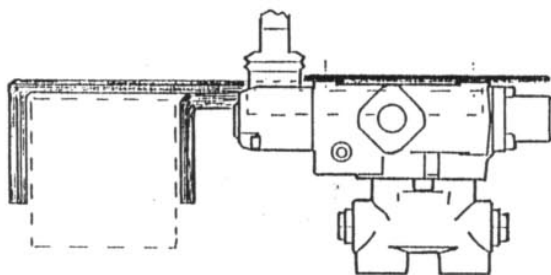
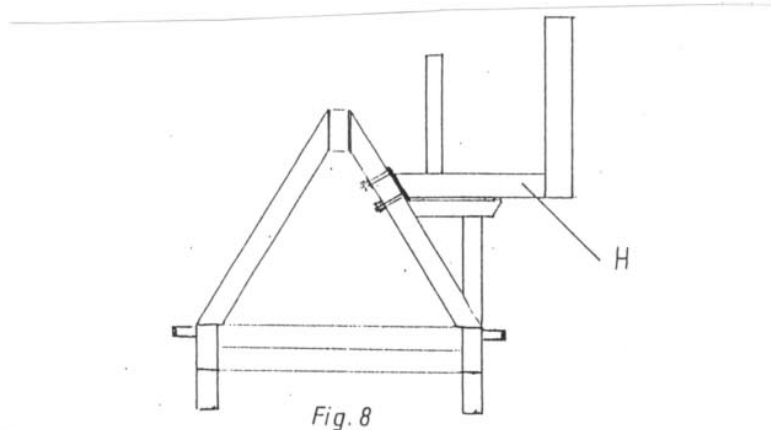


Fig. 7

Remove the guard from the left-hand side of the wrapper if mounted, and fit the new support for the pre-stretcher unit. Fig 8. Check that the tabel can rotate free.



The singel acting cut-cylinder has a compressed air return. The compressed air is filled to the valve in the bottom of the cylinder by a normal car pump or compressor. Be careful when you are filling up the cylinder with air, while the pistonrod can come out of the cylinder very rapidly. When the pistonrod is fully out the pressure have to be 5-8 bar.

ELHO SILO-MATIC 310/320 & 410/420

Spare parts

FRAME

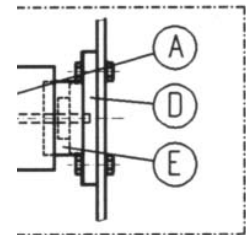
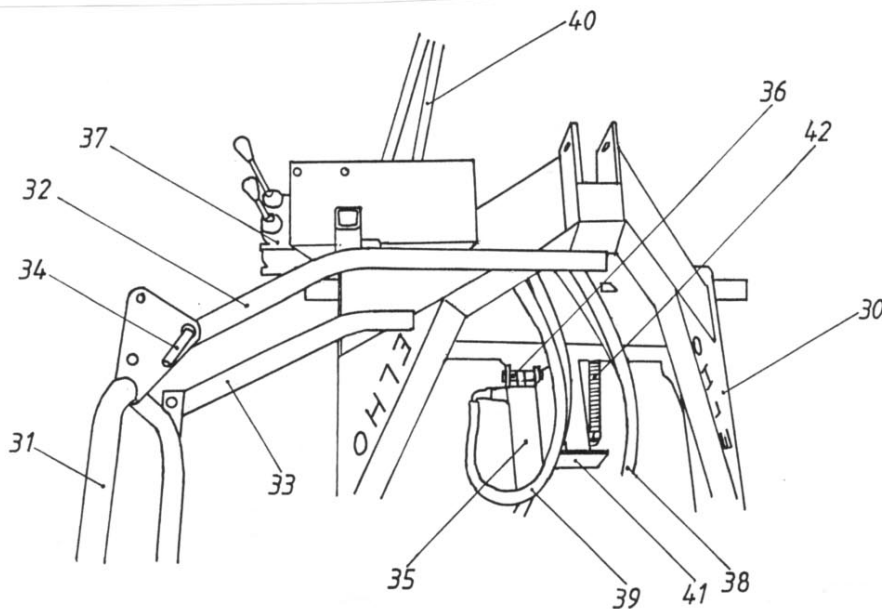
Pos.	Name	No.	Pcs.
30	Main-frame	800170	1
	Main-frame, cable control	800171	1
31	Guard-rail	803021	1
32	Upper guard bow	803022	1
33	Lower guard bow	803023	1
34	Guard pin	803050	1
35	Cylinder	800070	1
	Seal kit for tip-cyl.	800078	
36	Lower cylinder pin	800242	1
	Upper cylinder pin	800241	1
37	Valve (2-sections)	801200	1
37	Valve (3-sections)	805670	1
38	Hose (motor L=1850)	801210	2
	Hose (motor L=1320)	806530	2
39	Hose (cylinder L=1400)	801220	2
	Hose (cylinder L=450)	806510	1
	Hose (cylinder L=700)	806520	1
40	Hose (L=2000)	801230	2
41	Stand support	800050	1
42	Spring	800250	1

e the "belt and

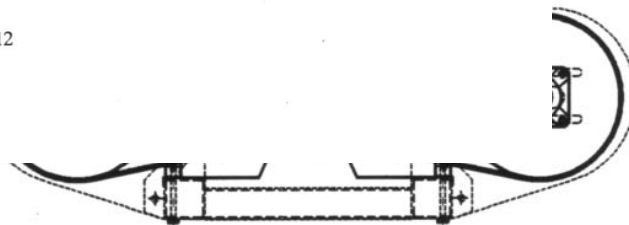
roll, A.
n table.
f the turn-

nds of the belt

Tighten all



12

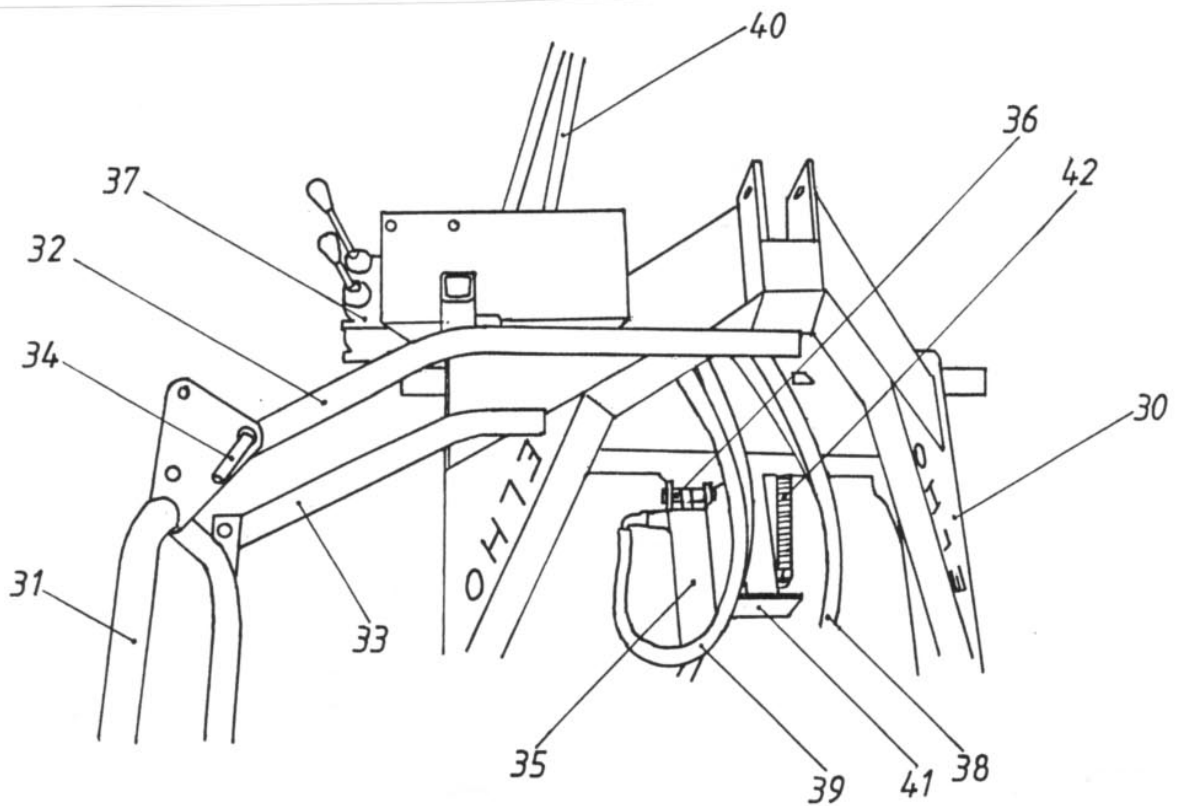


ELHO SILO-MATIC 310/320 & 410/420

Spare parts

FRAME

<u>Pos.</u>	<u>Name</u>	<u>No.</u>	<u>Pcs.</u>
30	Main-frame	800170	1
	Main-frame, cable control	800171	1
31	Guard-rail	803021	1
32	Upper guard bow	803022	1
33	Lower guard bow	803023	1
34	Guard pin	803050	1
35	Cylinder	800070	1
	Seal kit for tip-cyl.	800078	
36	Lower cylinder pin	800242	1
	Upper cylinder pin	800241	1
37	Valve (2-sections)	801200	1
37	Valve (3-sections)	805670	1
38	Hose (motor L=1850)	801210	2
	Hose (motor L=1320)	806530	2
39	Hose (cylinder L=1400)	801220	2
	Hose (cylinder L=450)	806510	1
	Hose (cylinder L=700)	806520	1
40	Hose (L=2000)	801230	2
41	Stand support	800050	1
42	Spring	800250	1

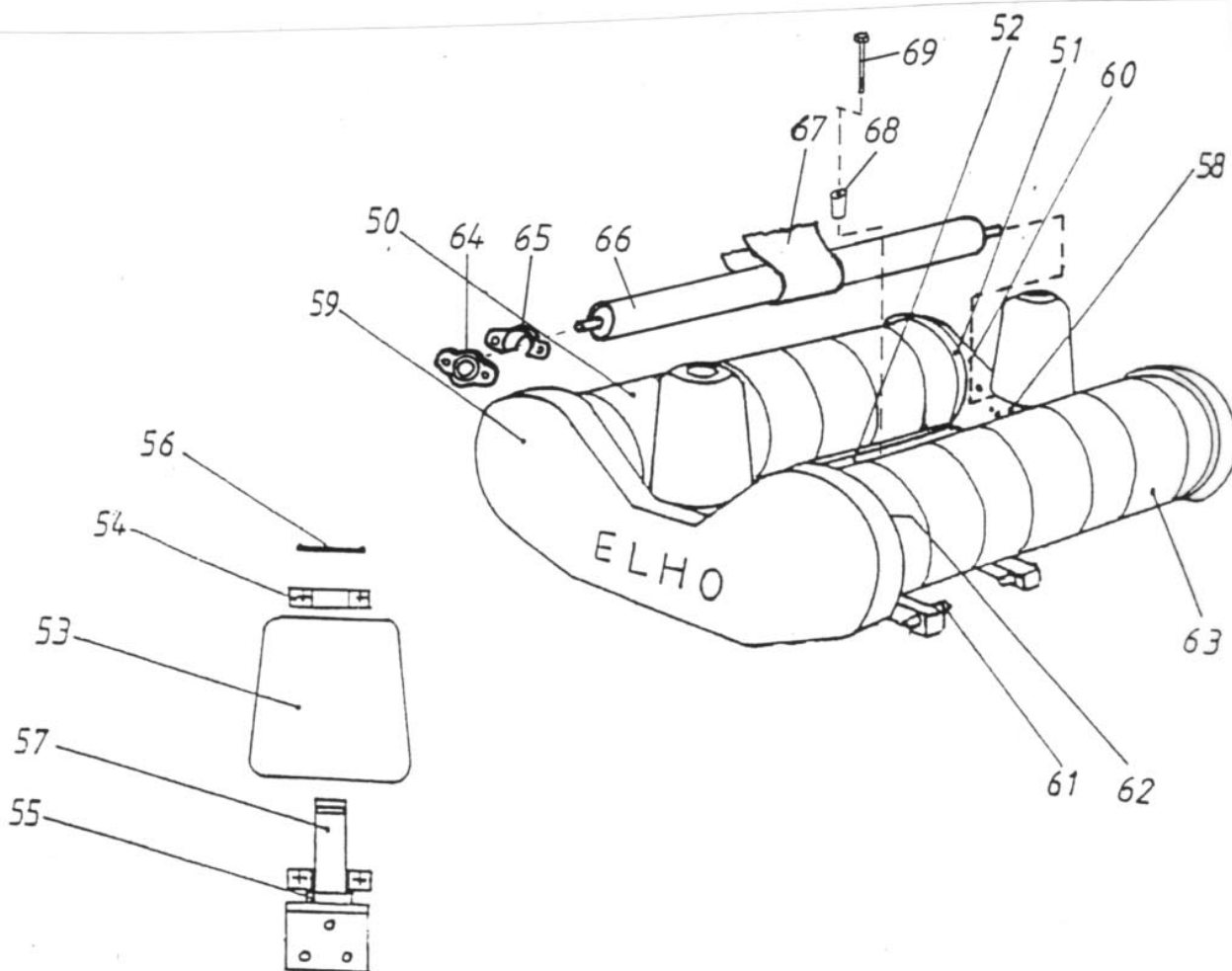


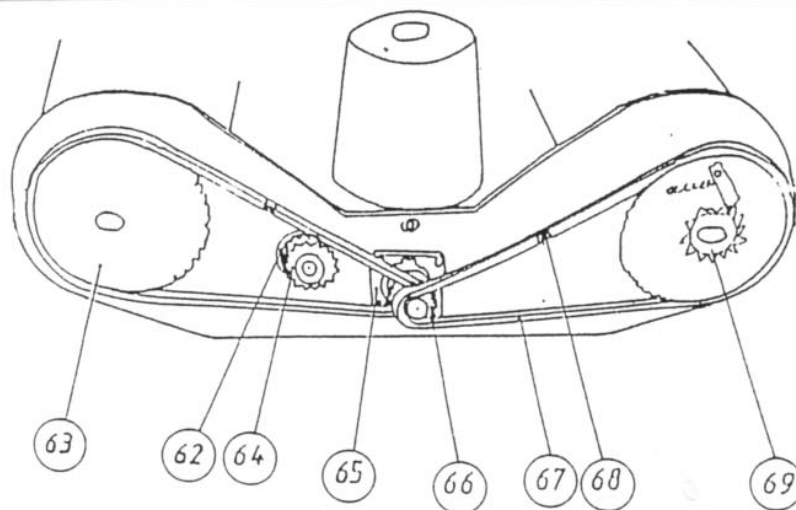
TURNTABLE

<u>Pos.</u>	<u>Name</u>	<u>No.</u>	<u>Pcs.</u>
50	Mainroller	803455	2
51	Winding-guard	803560	4
52	Main cover	803535	1
53	Guide roller	803580	2
54	Bearing 6007 2RS	4	
55	Distance bush	803572	2
56	Cup	802041	2
57	Guide roller shaft	803570	2
58	Screw M12x35	6	
59	Chain cover	803016	1
60	End plate	803526	1
61	Shaft	805190	2
62	End plate (transmission side)	803525	1
63	Anti-slip stripes	803457	6

Belts and support rolls (option) compl. kit 803480

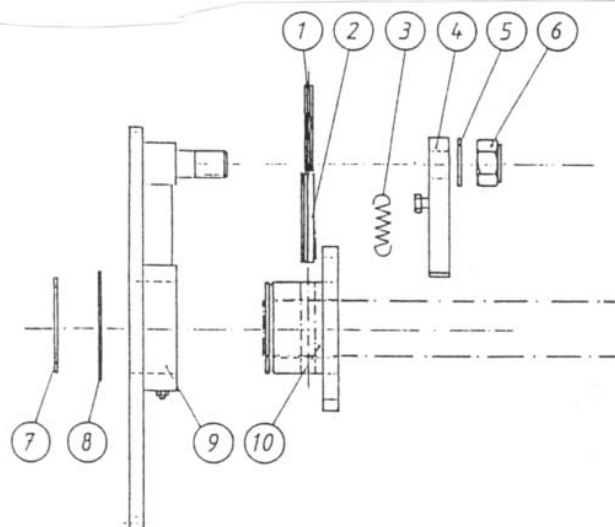
64	Bearing UCFL 205	811220	4
65	Winding-guard	810230	4
66	Support roll	803460	2
67	Belt	803465	4
68	Guide socket	810150	8
69	Bolt M10 x 170 DIN 931		8





SPROCKET

Pos.	Name	No.	Pcs.
62	Chain extension 10B	801240	1
63	Sprocket Z=54	801091	1
	Sprocket Z=48	801710	1
64	Sprocket Z=12/12 (66%)	801092	1
	Sprocket Z=18/18	801095	1
	Sprocket Z=24/24	801094	1
65	Bearing UCF 207		1
66	Sprocket Z=16 (50%)	801093	1
67	Main chain 10B -90	801170	2
68	Chain joint 10B	801120	2
69	Ratchet drive (compl.) Z=54	801660	1
	Ratchet drive (compl.) Z=48	801700	1

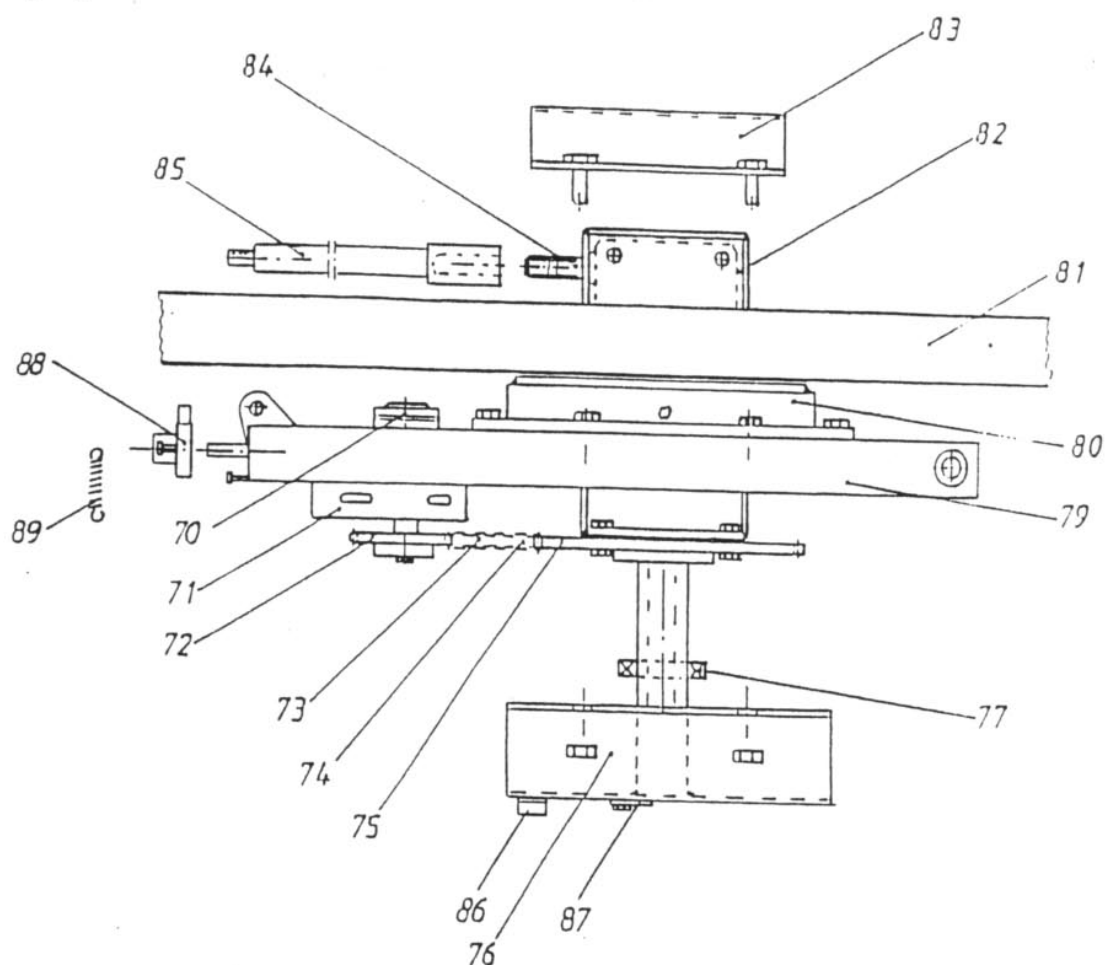


RATCHET DRIVE

1	Roller pin 6x55	801665	1
2	Roller pin 10x55	801664	1
3	Spring	307061	1
4	Click	801690	1
5	Washer M16	801662	1
6	Lock nut M16	801661	1
7	Locking ring A55	801663	1
8	Washer 55x68x0,5	801666	1
9	Sprocket Z=54	801670	1
	Sprocket Z=48	801701	1

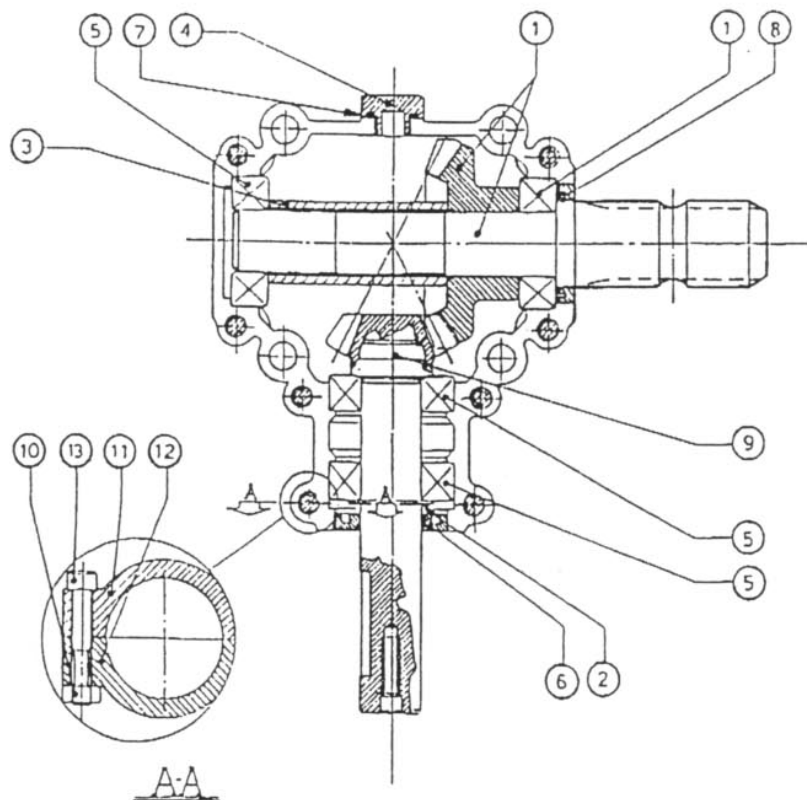
SUB FRAME

Pos.	Name	No.	Pcs.
70	Hydraulic motor Danfoss OMP160	801022	1
	Seal kit 151-1154	801025	
	Hydraulic motor Geolink	801026	1
	Seal kit	801027	
	Hydraulic motor Danfoss OMR160LL	801028	1
	Seal kit (AC/ACI)	801029	
71	Motor bracket	801021	1
72	Sprocket z=17	801160	1
73	Chain ISO 10B 84 link	801180	1
74	Chainjoint 10B	801120	1
75	Sprocket Z=57	801100	1
76	Bottomplate	804010	1
77	Bearing 6009 2RS	1	
79	Sub frame	800160	1
80	Turntable bearing	801140	1
81	Turntable frame	803510	1
82	Gear box support	810120	1
83	Box cover	810130	1
84	Gear box	801190	1
85	Drive shaft	801080	1
86	Hose-clamp	805451	1
87	Bracket	805452	1
88	Lock	803701	1
89	Spring L=125	808037	1



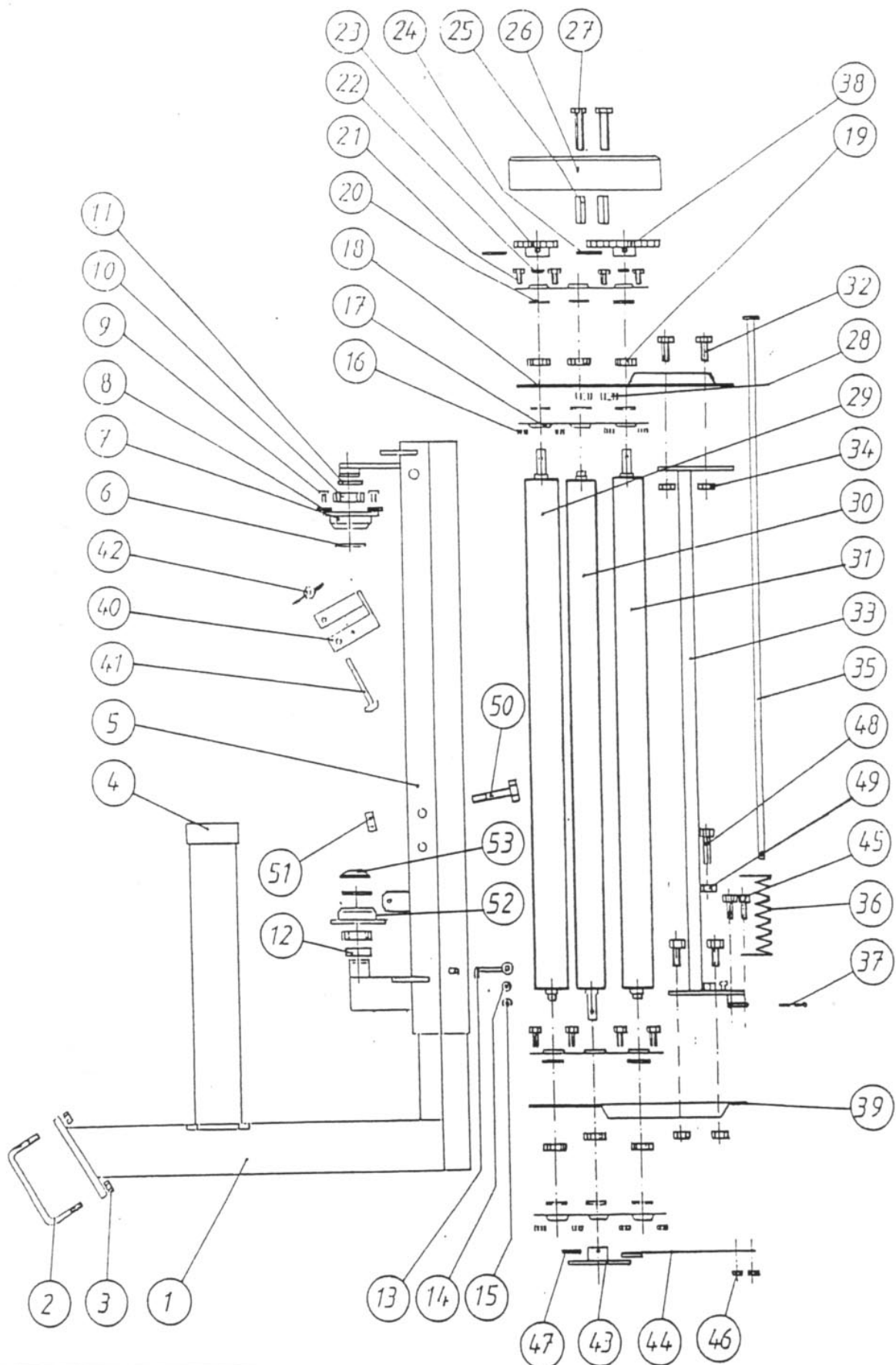
GEAR BOX

<u>Pos.</u>	<u>Name</u>	<u>No.</u>	<u>Pcs.</u>
1	Shaft	801510	1
2	Snap ring 25 UNI 7435	801520	1
3	Spacer	801530	1
4	Plug 3/8"GAS	801540	1
5	Bearing 6205	801550	3
6	Oil seal 25x47x7	801560	1
7	O-ring OR-3062	801570	1
8	Oil seal 35x47x7	801580	1
9	Pinion shaft 210 M4.5	801590	1
10	Hex. nut M8	801600	8
11	Casing	801610	1
12	Casing	801620	1
13	Bolt M8x45 8.8	801630	8



FILM PRE-STRETCHER 500mm MKII

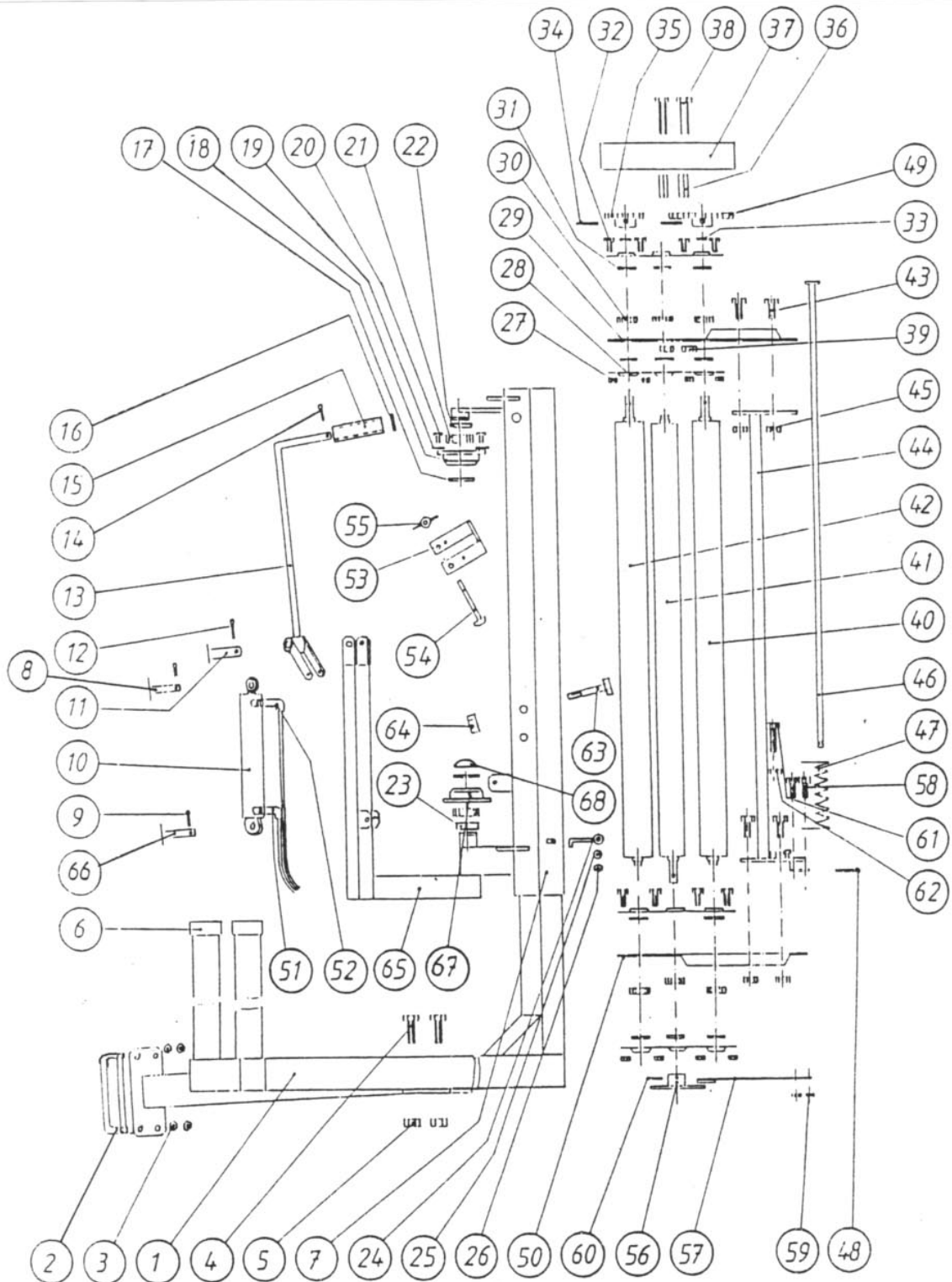
<u>Pos.</u>	<u>Name</u>	<u>No.</u>	<u>Pcs.</u>
	Film Pre-stretcher	808501	1
1	Pre-stretcher sub frame	806320	1
1	Pre-stretcher sub frame (cut & tie)	806300	1
2	U-bolt	808191	2
3	Lock nut M12	808192	4
4	Cup	808195	1
5	Pre-stretcher frame	808265	1
6	Locking ring A30	808362	2
7	Aluminium ring	802180	1
8	Washer	808340	3
9	Screw M6x8	808341	3
10	Bearing 6206 2RS	808342	2
11	Spacer C=5	808221	1
12	Spacer C=15	808222	1
13	Hook	808280	1
14	Washer M8	808281	1
15	Lock nut M8	808282	1
16	Lock nut M6	808031	8
17	Housing flange	808036	4
18	Upper shield	808020	1
19	Bearing 6202 2RS	808021	6
20	O-ring 34,60x2,62	808022	12
21	Bolt 6x16	808023	8
22	Washer 20/15	808035	3
23	Gear z=34	808170	1
24	Roller pin 6x40	808171	2
25	Spacer	808060	2
26	Cover	808040	1
27	Bolt M8x60	808041	2
28	Lock nut M8	808282	2
29	Stretch roller	808135	1
30	Guide roller	808415	1
31	Brake roller	808135	1
32	Bolt M10x25	808211	4
33	Distance tube	808215	1
34	Lock nut M10	808091	4
35	Torsional axle	808085	1
36	Torsional spring	808270	1
37	Split pin 3,2x32	808301	1
38	Gear z=57	808180	1
39	Lower shield	808011	1
40	Clamp	808250	1
41	Lock screw M10x90	808251	1
42	Wing nut M10	808252	1
43	Brake disk	808400	1
44	Brake	802011	1
45	Bolt M6x16	808023	2
46	Lock nut M6	808031	2
47	Roller pin 6x25	808401	1
48	Bolt M10x60	808402	1
49	Nut M10	808403	1
50	Bult M12x90	808404	1
51	Lock nut M12	808192	1
52	Aluminium ring	808420	1
53	Cup	802040	1



FILM PRE-STRETCHER 750 mm MKII (option)

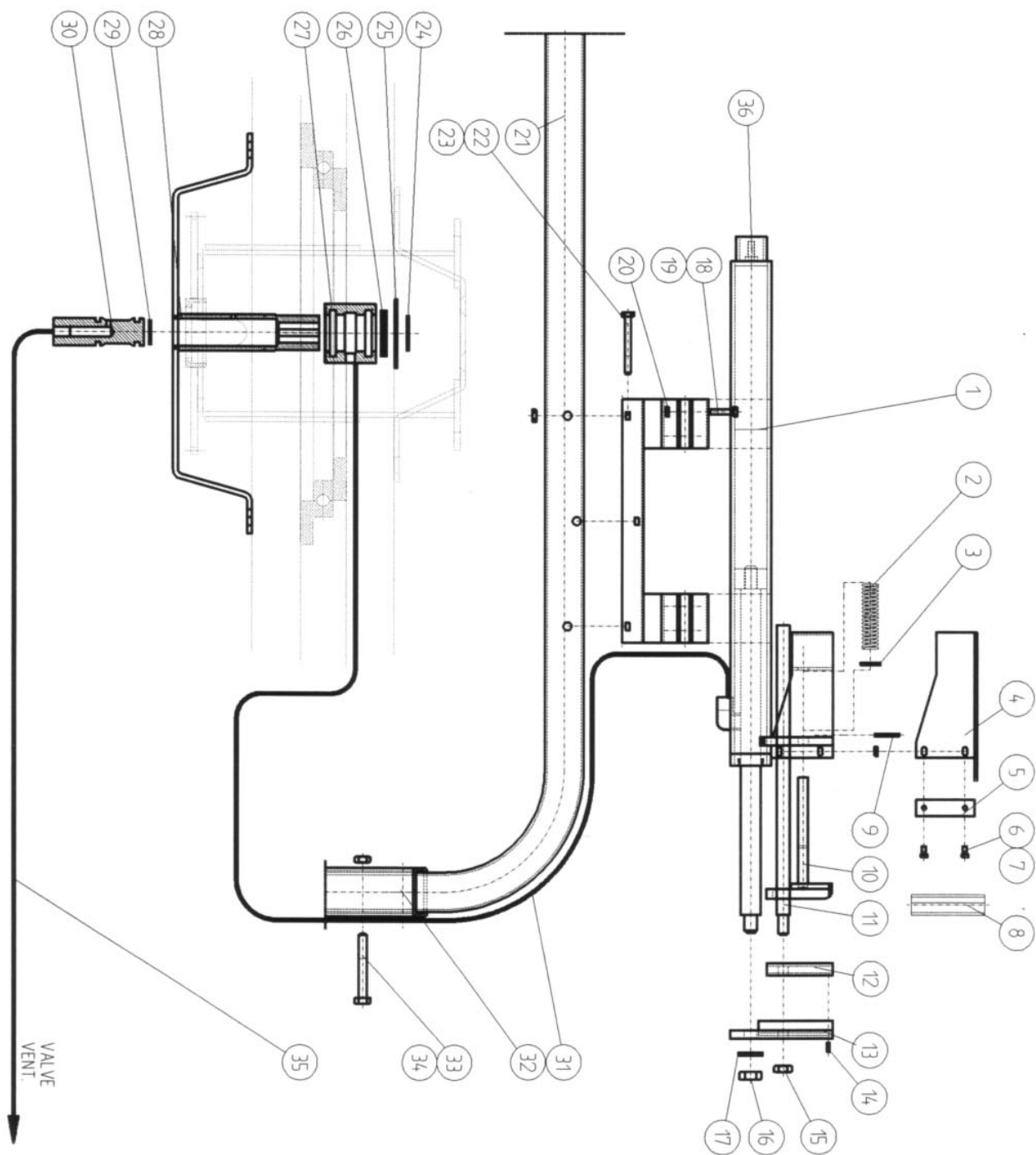
<u>Pos.</u>	<u>Name</u>	<u>No.</u>	<u>Pcs.</u>
	Film Pre-stretcher	808001	1
	Adapter 750/500	808390	
1	Pre-stretcher sub frame	806320	1
1	Pre-stretcher sub frame (cut & tie)	806300	1
2	U-bolt	808191	2
3	Lock nut M12	808192	4
4	Bolt M12x30	808193	4
5	Lock nut M12	808192	4
6	Cup	808195	3
7	Pre-stretcher frame	808261	1
	(with bolted arm- and cylinder frame 808201)		
8	Cylinder pin (fits no 808201)	808300	1
9	Split pin 3,2x32	808301	2
10	Cylinder	808151	1
11	Pin (fits no 808201)	808311	1
12	Split pin 3,2X32	808301	1
13	Arm (fits no 808201)	808241	1
14	Split pin 3,2x32	808301	1
15	Tube	808360	1
16	Washer M12	808361	1
17	Locking ring A30	808362	2
18	Roller spindle	802180	1
19	Washer	808340	3
20	Screw M6x8	808341	3
21	Bearing 6206 2RS	808342	2
22	Spacer C=5	808221	1
23	Spacer C=15	808222	1
24	Hook	808280	1
25	Washer M8	808281	1
26	Lock nut M8	808282	1
27	Lock nut M6	808031	8
28	Housing flange	808030	4
29	Upper shield	808020	1
30	Bearingr 6202 2RS	808021	4
31	O-ring 34,60x2,62	808022	12
32	Bolt 6x16	808023	8
33	Washer 20/15	808035	3
34	Roller pin 6x40	808171	2
35	Gear Z=34	808170	1
36	Spacer	808060	2
37	Cover	808040	1
38	Bolt M8x60	808041	2
39	Lock nut M8	808282	2
40	Stretch roller	808130	1
41	Guide roller	808410	1
42	Brake roller	808131	1
43	Bolt M10x25	808211	4
44	Distance tube	808210	1
45	Lock nut M10	808091	4
46	Torsional axle	808080	1
47	Torsional spring	808270	1
48	Split pin 3,2x32	808301	1
49	Gear z=57	808180	1
50	Lower shield	808010	1
51	Hose L=1390	808152	1
52	Hose L=1600	808153	1
53	Clamp	808250	1
54	Lock screw M10x90	808251	1
55	Wing nut M10	808252	1

57	Brake	802011	1
58	Bolt M6x16	808023	2
59	Lock nut M6	808031	2
60	Roller pin 6x25	808401	1
61	Bolt M10x60	808402	1
62	Nut M10	808403	1
63	Bolt M12x90	808403	1
64	Lock nut M12	808192	1
65	Arm- and cylinder frame (bolted to 808261)	808201	1
66	Cylinder pin (fits no 808201)	808312	1
67	Aluminium ring	808420	1
68	Cup	802040	1



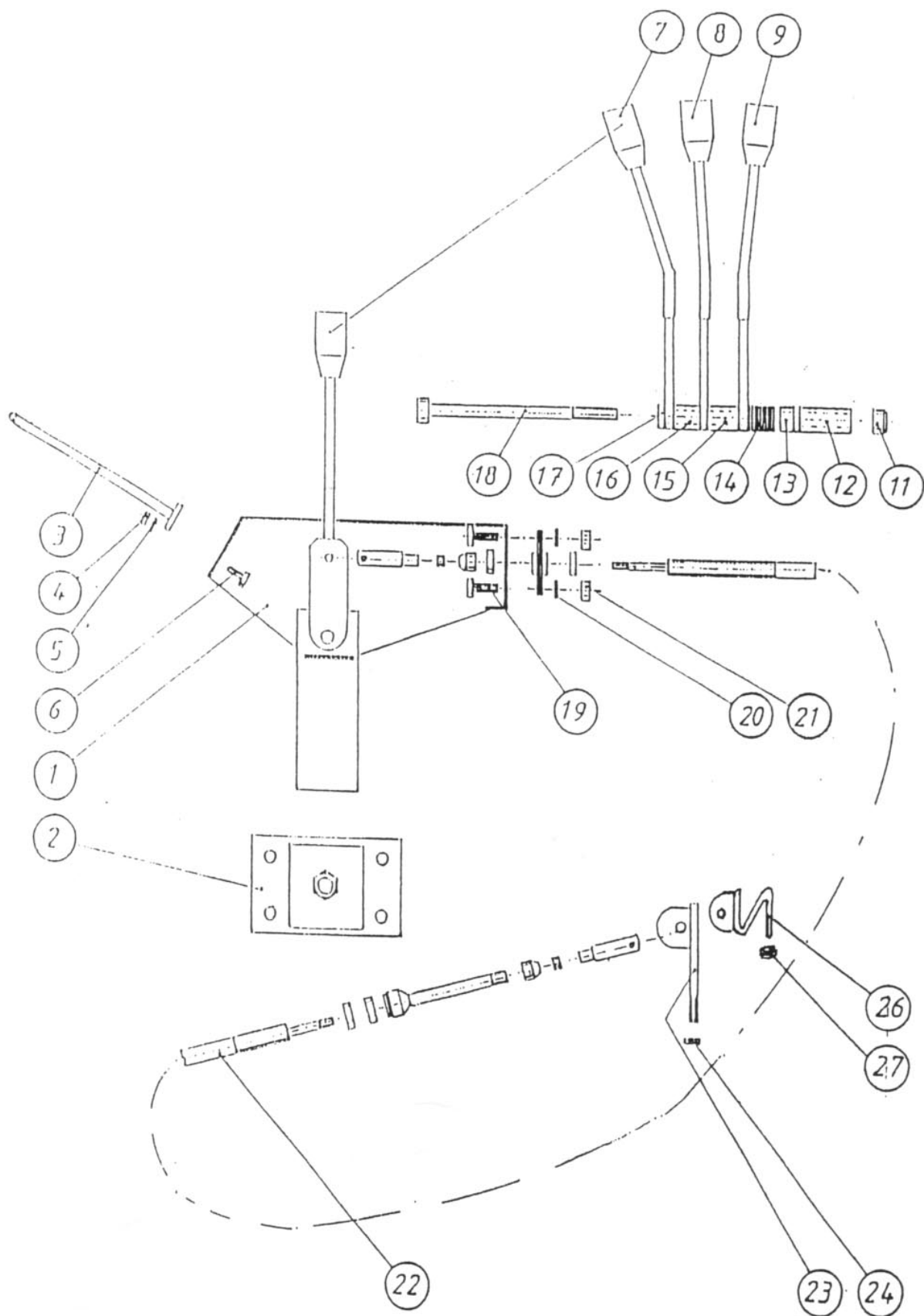
CUT AND TIE DEVICE

<u>Pos.</u>	<u>Name</u>	<u>No</u>	<u>Pcs</u>
1	Cutting-cylinder (stripped)	804146	1
	Cutting-cylinder (complete)	804147	1
	Seal kit	804143	
2	Compression spring	804115	2
3	Washer M12 DIN 125 A		2
4	Cover	804121	1
5	Cutting blade (5 pcs)	804190	1
6	Screw M5x10 DIN 933		2
7	Nut M5 DIN 934		2
8	Cutting blade guard	804191	1
9	Spring pin 3x30 DIN 1481		2
10	Counter-clamp	804119	1
11	Guide shaft	804042	1
12	Clamp rubber plate	804050	1
13	Clamp base plate	804041	1
14	Spring pin 3x12 DIN 1481		1
15	Nut M12 DIN 985		1
16	Nut M16 DIN 936		1
17	Washer M16 DIN 6798 A		1
18	Screw M6x35 DIN 933		4
19	Nut M6 DIN 985		4
20	Cylinder mounting bracket (320-520)	804095	1
	Cylinder mounting bracket (1010-1410)	804096	1
21	Safety bar	805280	1
22	Screw M8x70 DIN 603		3
23	Nut M8 DIN 985		3
24	Lock washer A 45 DIN 471		1
25	Washer 84/46x3	810705	1
26	Seal	804210	2
27	Oilconnection bush	804031	1
28	Center shaft welded to plate	804010	1
29	O-ring 25x5	804211	2
30	Piston	804021	1
31	Hose 1/4" l=2300	804170	1
32	Safety bar mounting (320-620)	805910	2
33	Screw M12x80 DIN 931		2
34	Nut M12 DIN 985		2
35	Hose (320-620) 1/4" l=1840	806540	1
	Hose (1010) 1/4" l=3900	804185	1
	Hose (1210) 1/4" l=2000	804186	1



REMOTE CABLE CONTROL KIT 320 & /420

<u>Pos.</u>	<u>Name</u>	<u>No.</u>	<u>Pcs.</u>
1	Remote control box	805830	1
2	Bracket for control box	805831	1
3	(option) Safety bar (monitor)	805900	1
4	(option) Lock nut M6	805901	2
5	(option) Washer M6	805902	2
6	(option) Screw M6x16	805903	2
7	Lever (turntable)	805720	1
8	Lever (cut & tie devie)	805721	1
9	Lever (unloading)	805722	1
11	Lock nut M10	805761	1
12	Spacer C=40	805760	1
13	Spacer C=10	805762	1
14	Disc spring washer	805763	12
15	Spacer C=25	805764	1
16	Spacer C=20	805765	1
17	Spacer C=5	805766	1
18	Screw M10x150	805767	1
19	Screw M6x16	805903	6
20	Washer M6	805902	6
21	Lock nut M6	805901	6
22	Cable complete	710220	3
23	Lever M8	805750	2
24	Nut M8	805751	2
26	Lever M8	806360	1
27	Nut M8	805751	1



ELHO BALE ROTAROR
310/320 & 410/420

Pos.	Name	No	Pcs.
1	Lockring A 28 DIN 471		1
2	Washer Ø42/30x1 DIN 988		2
3	Wheel complete	458010	1
4	Lock nut M10 DIN 985		4
5	Washer M10 DIN 125A		4
6	Bolt M10x40 DIN 933		4
7	Roll	809620	1
8	Plain bearing Ø28/25 l=15		2
9	Mounting bracket	803817	2
10	Shaft	803821	1
11	Spring pin Ø10x50 DIN 1481		1
12	Lock nut M16 DIN 985		1
13	Bolt M12x35 DIN 933		2
14	Sub frame bracket (310-420)	803831	2
15	Lock nut M12 DIN 985		6
16	Washer M12 DIN 125 A		6
17	Distans busch Ø42/35 l=32	809528	1
18	Arm	803820	1
19	Shaft Ø30 l=135	809670	1
20	Lock	803805	1
21	Bolt M6x20 DIN 933		1
22	Lock nut M6 DIN 985		1
23	U-bolt M12	808191	2
24	Sub frame	803830	1
25	Bolt M8x16 DIN 933		1

